

arts & galleries

email: jarthur@buckscountyherald.com

Bucks County Classical Arts Center to present Student Work Show

Bucks County Classical Arts Center hosts its 2024 Student Work Show June 5 to 15.

Artwork was created during the school year, from September 2023 to May 2024, and includes pencil drawings, charcoal drawings, and oil paintings in a classical realist tradition. Subjects include still life, portrait, and figurative artwork.

The opening reception is 11 a.m.-2 p.m. Saturday, June 8. The exhibition is located at Bucks County Classical Arts Center, room 205 of the school building of St. Martin of Tours Church, 1 Riverstone Circle, New Hope.

The show can be easily accessed with free parking and a handicapped accessible location. This is an opportunity to see artwork that combines focus and discipline to achieve old world craft and technique. In



COURTESY OF BUCKS COUNTY CLASSICAL ARTS CENTER
"Portrait of Dancer" is by Jake Watson, pencil on paper.

many cases, students can spend dozens to hundreds of hours on drawings or paintings to get a museum-quality result.

"We take immense pride in presenting these drawings and paintings. The dedication and focus of our students never ceases to amaze me. I believe guests will be surprised that students made work of the quality level they achieved. It is rare in our modern world that people work this way, and they did a spectacular job," said

John Murdoch, director of Bucks County Classical Arts Center.

The show features over 30 drawings and paintings by students and instructors of the school. The school caters to students and professionals who love classical drawing and painting techniques. Classes are available for children to adults in drawing, oil painting

and, recently, sculpture. Subject matter for classes includes portrait, still life, figurative work and more. The school has been in operation in Bucks County since 2012 and occasionally has visiting artists.

For information, visit www.buckscountyclassicalartscenter.org.

"Beyond Boundaries" at Artists' Gallery to feature two local painters

Artists' Gallery presents "Beyond Boundaries," an exhibition showcasing the abstracted realities of painter Jane Adriance and the inspiring landscape paintings of Joe Kazimierzcyk.

Witness how these artists are pushing the boundaries of imagination, offering fresh perspectives for all to explore. Meet the artists at their opening reception from 5-7 p.m. Saturday, June 8. The exhibition runs from June 6 to 30 at Artists' Gallery, 18

Bridge St., Lambertville, N.J. Step into Adriance's world, where her use of semi-abstract perceptions invites viewers to explore the mysteries of the unseen where reality and imagination seamlessly intertwine.

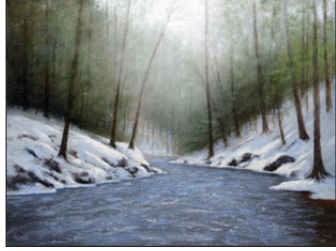
In contrast, Kazimierzcyk takes viewers on a journey deep into the forests and untamed landscapes discovered on his explorations of the region. Through his paintings, he invites you to lose yourself in the

tranquility of nature, offering sanctuary from the busy pace of everyday life.

The show offers the opportunity to experience art that transcends boundaries and pushes the limits of creativity.

See more of the artists' work on their websites.

Artists' Gallery welcomes visitors Thursday through Sunday, from 11 a.m. to 6 p.m. Visit LambertvilleArts.com for information.



CONTRIBUTED PHOTO

"Black River Symphony" is an acrylic on canvas by Joe Kazimierzcyk.



CONTRIBUTED PHOTO

"Moonlight Fantasy" is an oil on canvas by Jane Adriance.

ARTWRKD presents visual poetry exhibition by Monica Ong

ARTWRKD invites you to explore "Nocturne," a series of Monica Ong's poetic meditations on the things that keep you up at night.

In the heart of the gallery, an ambient listening lounge features Ong's "Insomnia Poems," read in the style of sleep tapes, where poetry becomes an oasis of both rest and resistance. In search of cures for sleeplessness, this visual poet leads us through an apothecary of cultural remedies, constellation maps, and her ancestors stargazing back at us through literary art objects and handheld poems. Whether in dreams of memory or by moonlight, these visual poems ask us to slow down for a close reading as they reveal stories long hidden in the dark.

The "Nocturne" opening reception is 6-9 p.m. May 31, in the ARTWRKD Exhibition Space. Ong will also join ARTWRKD for a poetry Reading from her new book "A

Mouth Holds Many Things" set to be released on June 24, will take place at 1 p.m. June 1 in the Exhibition Space at ARTWRKD. A select few copies will be available to patrons.

Ong is the recipient of the 2024 USA Artist Fellow award.

Alongside "Nocturne" will be Tracy Fitzgerald's solo show, "The Hidden-Revealed," on view in the Upstairs ARTWRKD Workshop Space. The show discusses her exploration of living with a hidden disease and how her inner struggles and hope manifest themselves through her mixed media work, which focus on the female form. "It is a moving tribute to bravery and strength."

Both exhibitions are on view from May 31 to June 15, at ARTWRKD, 126-128 S. State St. Newtown Borough. For information, contact 215-377-9766 or artcurator@artwrkd.com.



Bucks County Center for the Performing Arts

and Peddler's Village

Present

Tony n' Tina's Wedding

August 21-25, 2024

Cock 'n Bull Restaurant
Route 263 & Street Road, Lahaska, PA 18931



For tickets:
buckscountycpa.org
or call 215-794-4051



Painting auction to benefit PaLyme.org

Bidding ends June 2 for the silent auction of "Sunset Over Schofield-Ford Covered Bridge." The iconic covered bridge from Tyler State Park was painted by 30 local students as a fundraiser for PaLyme.org. The painting is on display at Countryside Gallery, 2 S. State St., Newtown. Bidding can be done in person or at youthartsilentauctionbids@aol.com. Pennsylvania leads the nation in Lyme cases, and Bucks County is one of the highest counties for Lyme in the state. Left undiagnosed and untreated, Lyme and tick-borne diseases can become debilitating and even life threatening. Pennsylvania Lyme Resource Network, an all-volunteer organization, is dedicated to helping Pennsylvanians through education, prevention, support and patient advocacy. Consider making an offer or donation.

Fine Art Gallery & Custom Framing



Watercolor by Jane Ramsey, "Summer Meadow," limited-edition giclée prints available.

SIMONS FINE ART FRAMING & GALLERY

122 N. Main St, Dublin • 215.249.9155
simonsfineartframing.com

RAGO

Connecting buyers and sellers across Fine Art, Design, Pottery, Glass, Jewelry and beyond. Contact our specialists for a complimentary evaluation of items in your collection today!

jewelry@ragoarts.com
609 397 9374

333 N. Main St. Lambertville NJ 08530
ragoarts.com

Roberto and Harolda Barile Marx, Formal Fine Art, Ceramics and Gold Jewelry \$300-800